

BAYSHORE PARK (FORMER PAR 3)
CITY OF MIAMI BEACH
Design Review Board
DRB 20-0563

September 1, 2020

PROJECT TEAM

City of Miami Beach - Capital Improvements
Client

Savino & Miller Design Studio (PRIME)
Landscape Architect & Master Planning

3TCI, Inc.
Survey and GIS

Ardaman & Associates
Geotechnical Engineering

Aquadynamics Design Group, Inc.
Aquatic Engineer

Coastal Systems International, Inc.
Civil Engineering, Site Grading & Drainage

Construction Management Services, Inc.
Cost Estimating

Douglas Wood Associates, Inc.
Structural Engineer

Edgewater Exhibits
Lake Consultant

Gallagher Bassett Technical Services (EE&G)
Environmental Engineering and Permitting

Global Sports & Tennis Design Group, LLC.
Tennis Court Design

Tropical Designs of Florida
Arborist

William Lane
Architecture

Kenneth Di Donato, Inc.
Irrigation Design

Johnson, Avedano, Lopez, Rodriguez & Walewski Engineering Group, Inc. (JALRW)
MEP



Coastal Systems, Savino Miller Design Studio, JALRW & Kenneth DiDonato



William Lane



Coastal Systems, Savino Miller Design Studio, William Lane, JALRW & Kenneth DiDonato



Douglas Wood



To create a passive park of natural beauty for community enjoyment and enrichment, reflecting our island's culture and ecology while serving as a model of sustainability, stewardship and resilience.

HISTORIC BACKGROUND

Land Deed



"...not to use the land hereby conveyed, or any part thereof, or to permit the same to be used for any purpose whatsoever other than for a golf course and/or golf links and that this covenant shall run with and bind said land."



Carl Fisher



1915 - Golf course



1920 - Golf Course



1921 (10:30 pm)



John Collins



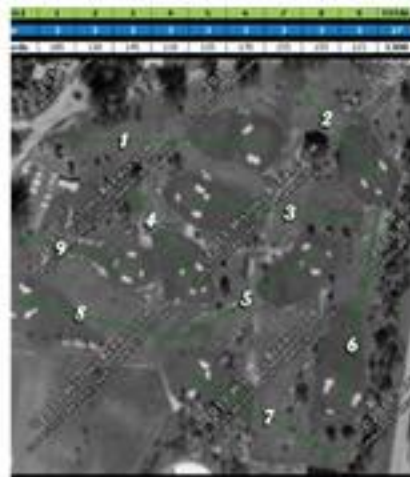
1927 - Golfer teeing off atop Rosie the Elephant



1935 - Miami Beach Course (L); Par 3 Course (R)



1962 - New golf course in north section (Bayshore)



Rebuilt in 1962 and demolished in 2005



1992 - Land traded (settlement agreement)



2016



CIRCULATION



PARKS AND OPEN SPACE



LAND USE

SITE ASSETS



Existing residential



Specimen shade trees



Large lawn area



Some bird population



Surrounding neighborhood access



Views



Existing Bus Stop



Visibility & Access



Surrounding Educational & Recreational Uses

ISSUES & CONSTRAINTS



Pump Station



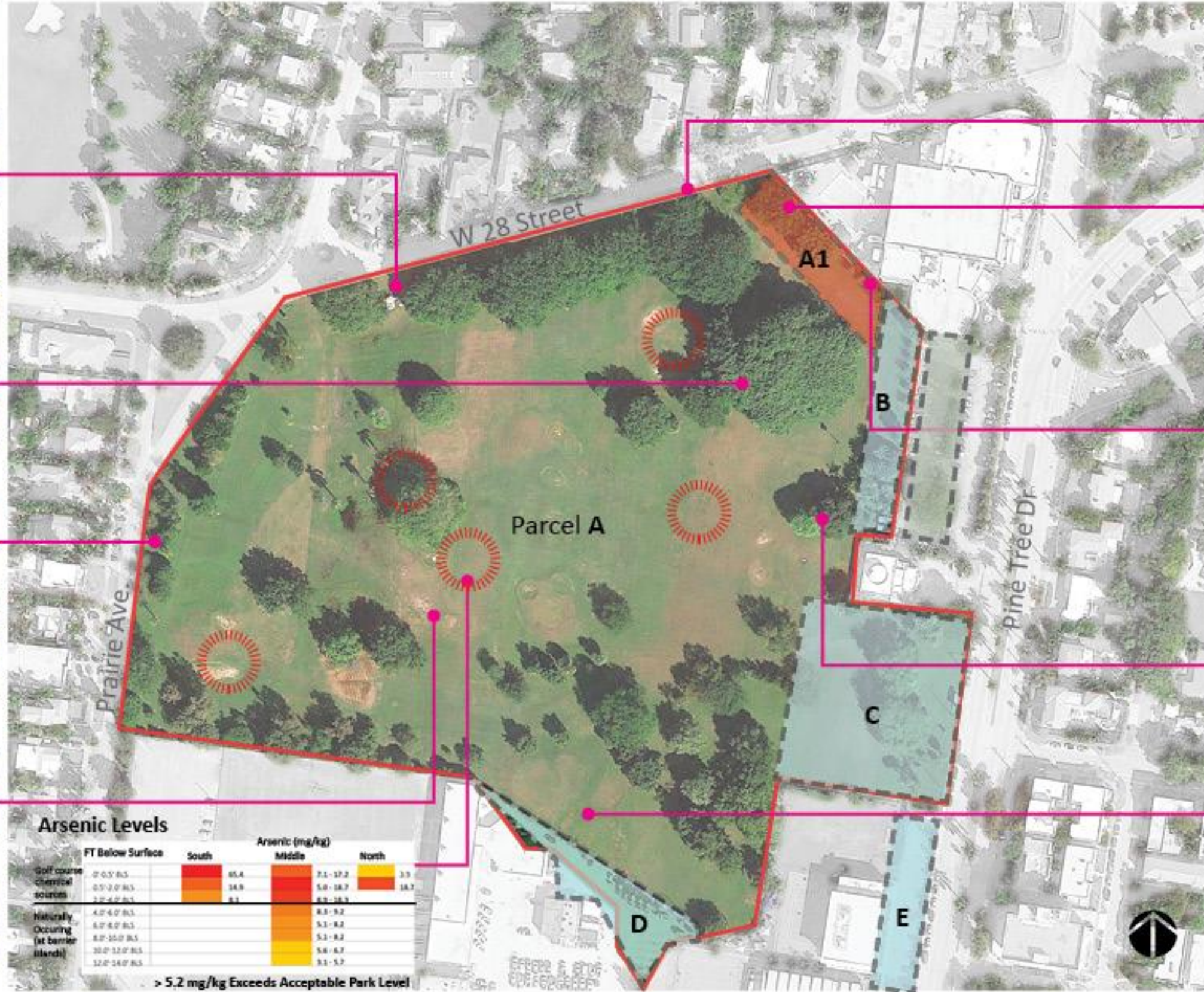
Tree Maintenance & Preservation



Stormwater / Swale



No Sense of Place



Lack of Sidewalks



Edge Conditions



Lack of Connection

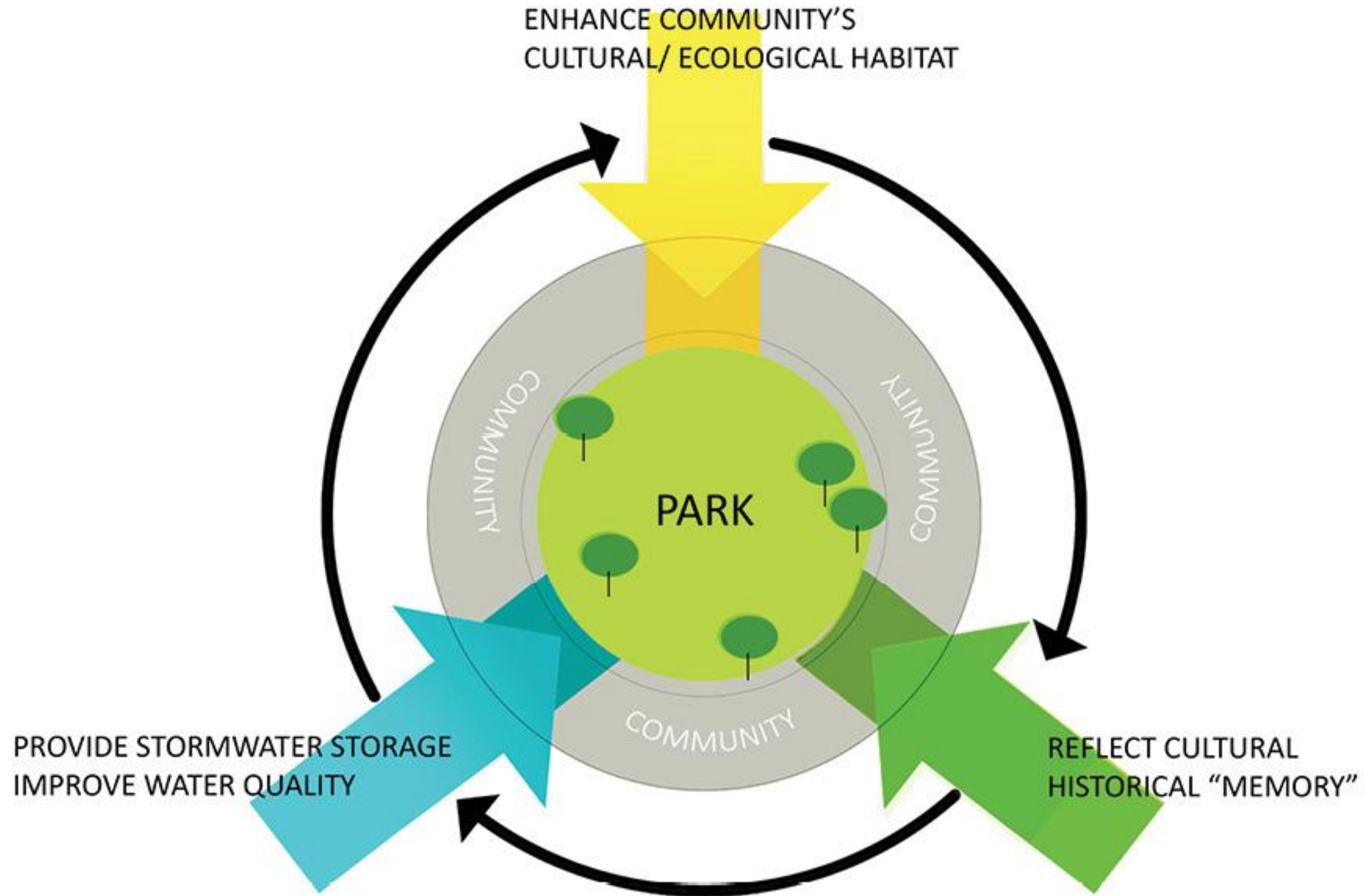


Homeless Residents

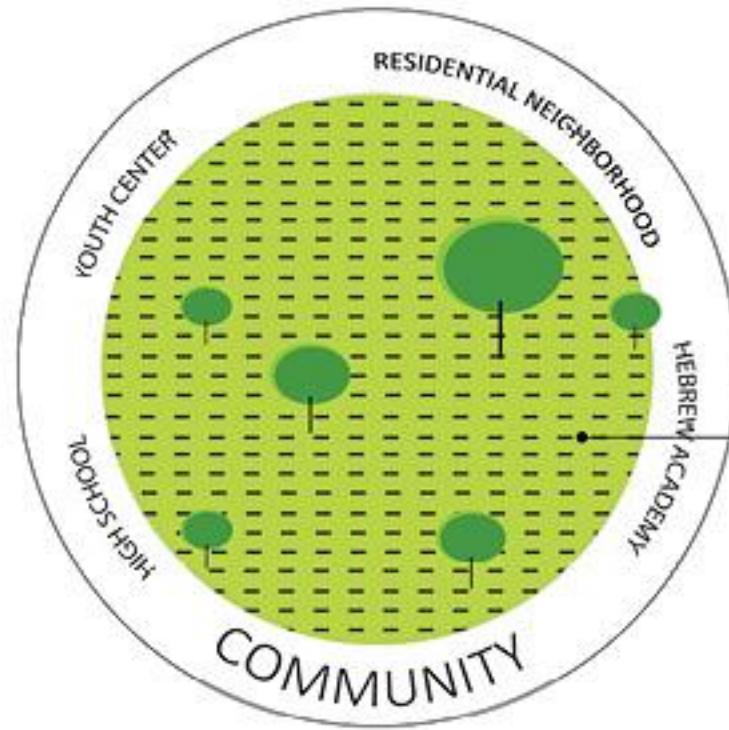


Lack of Biodiversity

DESIGN APPROACH & STRATEGY



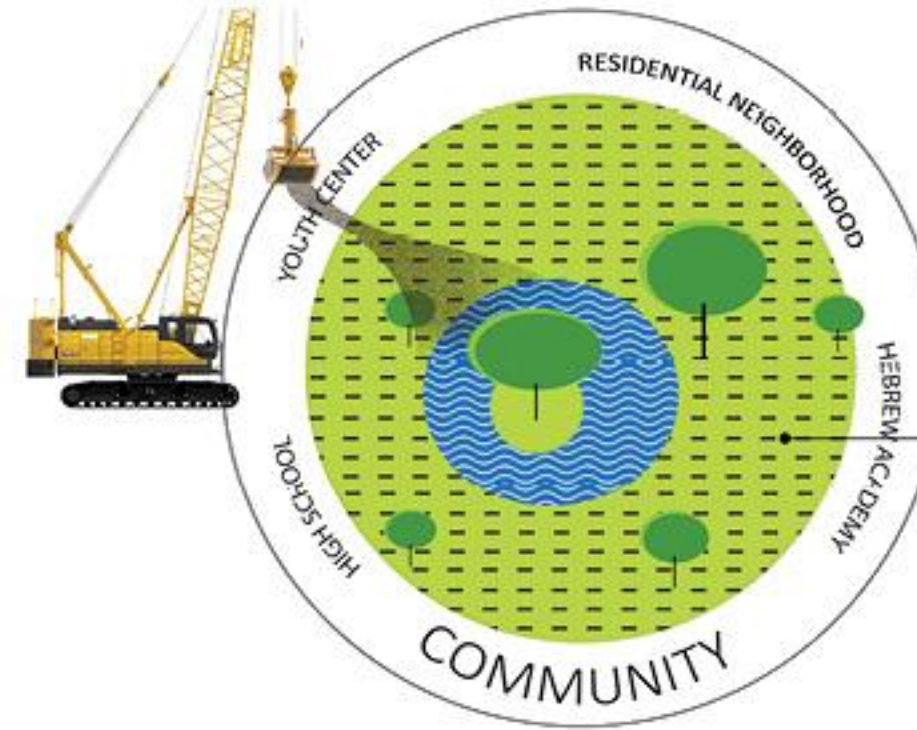
DESIGN APPROACH & STRATEGY



STEP 1

- Existing site condition

 EXISTING TREES
 CONTAMINATED SOILS



STEP 2

- Preserve best existing trees
- Dig lake

 EXISTING TREES
 CONTAMINATED SOILS



STEP 3

- Form golf-like landforms to cap contaminated soil
- Create various littoral zones for diverse ecological habitats
- Improve drainage



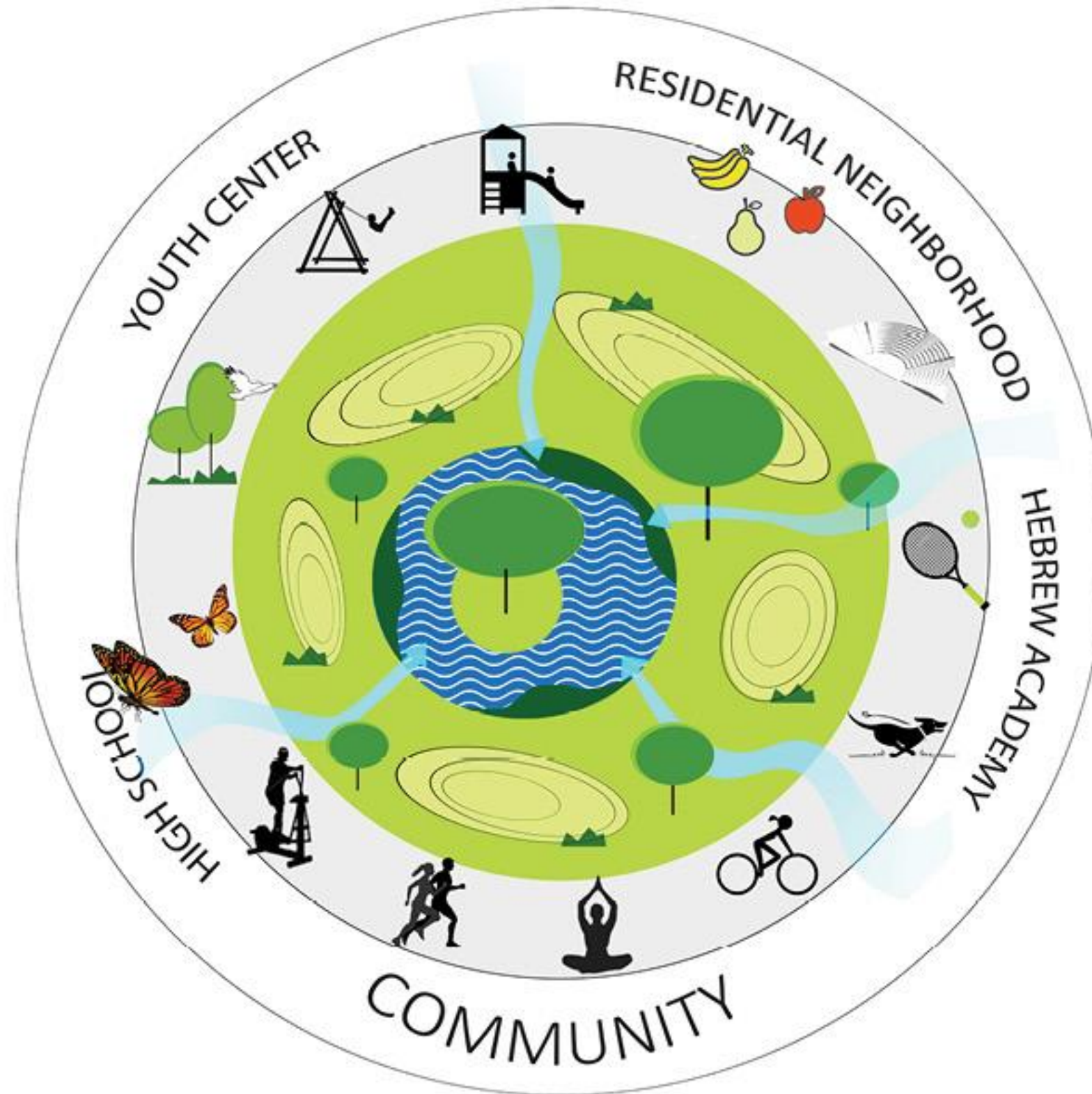
STEP 4

- Complete landforms with clean fill
- Cap remainder of site
- Final grading

Cut & Fill



CONCEPT DIAGRAM



- Lake dug to create landforms, provide cap for contamination and site water retention
- Lake to provide future neighborhood watershed storage to enhance City resiliency
- Topography is established
- Littoral zones are established
- Trees are preserved and new trees are planted
- Program is placed
- Activities commence
- Park thrives with a healthy environment and an engaged public

PROGRAM & ACTIVITIES

Lake

Boardwalks
Bird Watching

Amphitheater
Gathering

Trail

Walking
Jogging

Biking
Exercise
Equipment

Playground

2-5 yr old play
5+ yr old play

Tennis Facilities

Courts
Shelters
Seating

Restrooms
Office
Storage

Dog Park

Small dog play
Large dog play

Education

Arboretum
Butterfly garden
Lake, Aquatic Littoral Zone

Hills & Lawns

Fitness
Contemplation
Yoga

Open play
Droning
Disc golf



SITE FUNCTIONAL DIAGRAM

PEDESTRIAN USE

-  Bus Stops
-  Existing Sidewalk
-  Major Traffic
-  Existing Bike Lane
-  Proposed Sidewalk
-  Proposed Bike Lane

PARK ZONES

-  Parking
-  Entry
-  Active Recreation
-  Passive Recreation
-  Pollinator Garden
-  Pet Friendly
-  Central Lake
-  Swale
-  Littoral Zone
-  Changes in Elevation
-  View shed

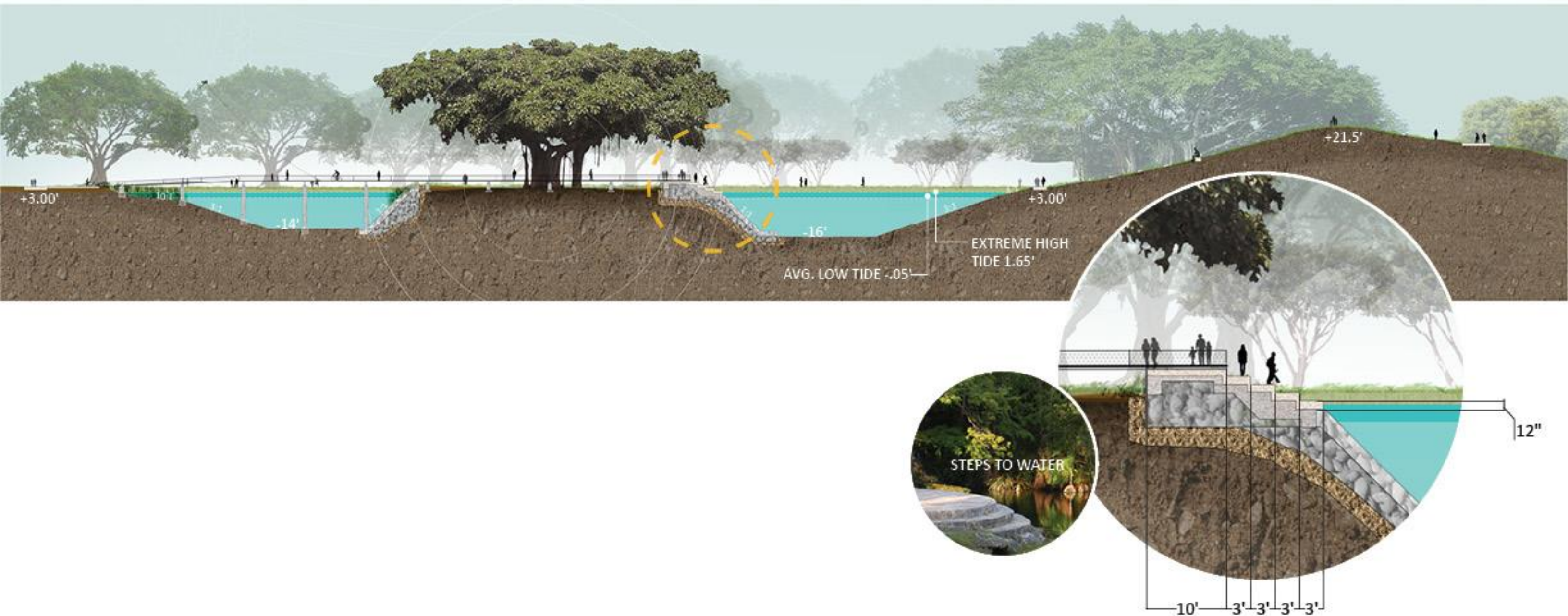


LEGEND

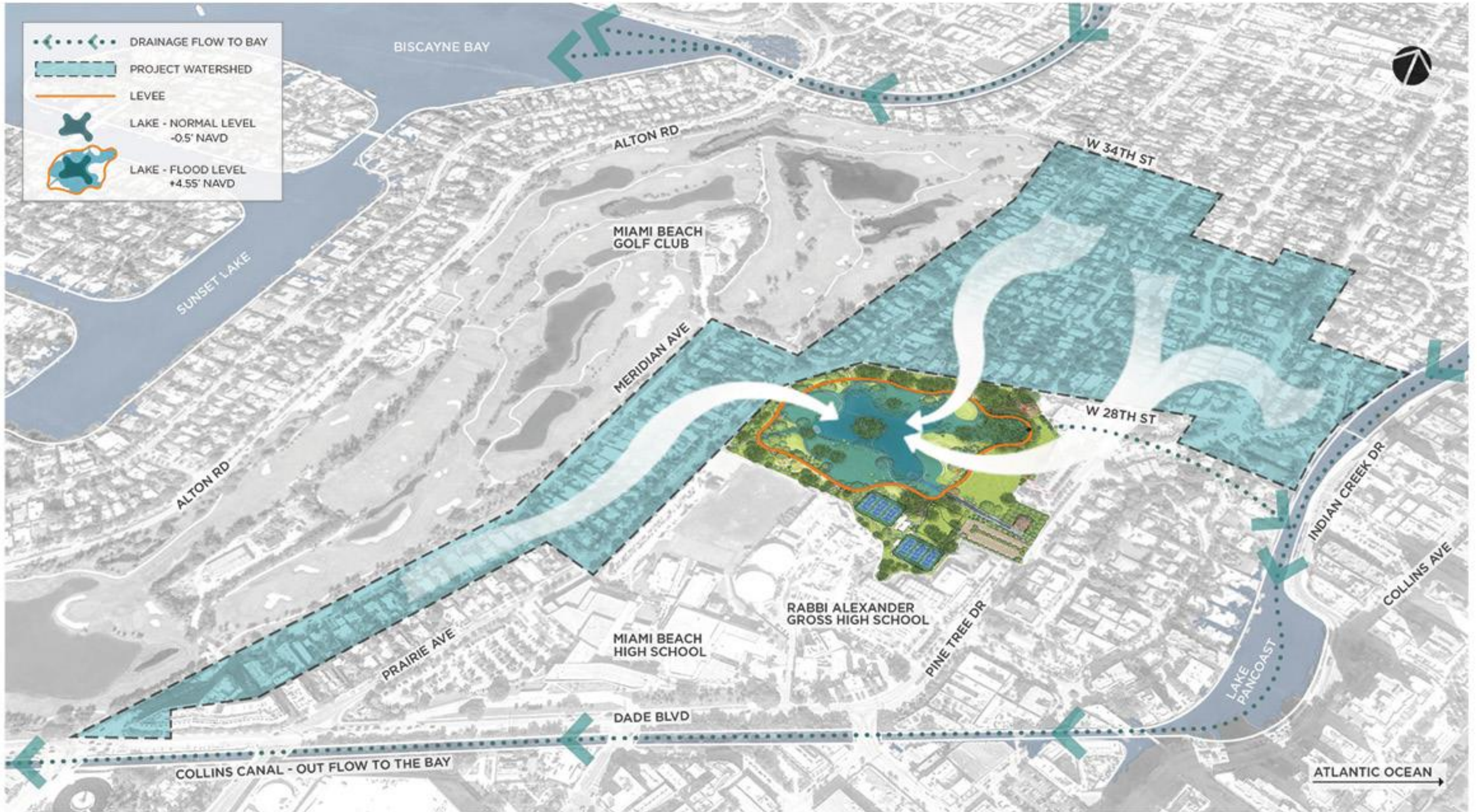
- 1 Playground
 - 2 Bus stop
 - 3 Tennis Courts
 - 4 Tennis Facility and Bathroom
 - 5 Parking
 - 6 Dog Park
 - 7 Entrance Plaza
 - 8 Butterfly Garden
 - 9 Amphitheater
 - 10 Sunset Terrace
 - 11 Lake & Islands: Elev. 0.5' NAVD
 - 12 Exercise Cluster
 - 13 Meadow
 - 14 Open Play
 - 15 Overlook
 - 16 Pavilions
 - 17 Linear Water Feature
 - 18 Park Signage
 - 19 Maintenance Area
 - 20 Trash Collection
- Trail System (5')
- Jogging / Maintenance /
Emergency Path (10')
- Levee Elev. +4.60' IAVD



ISLAND SECTION








NEIGHBORHOOD WATERSHED AND PARK DRAINAGE



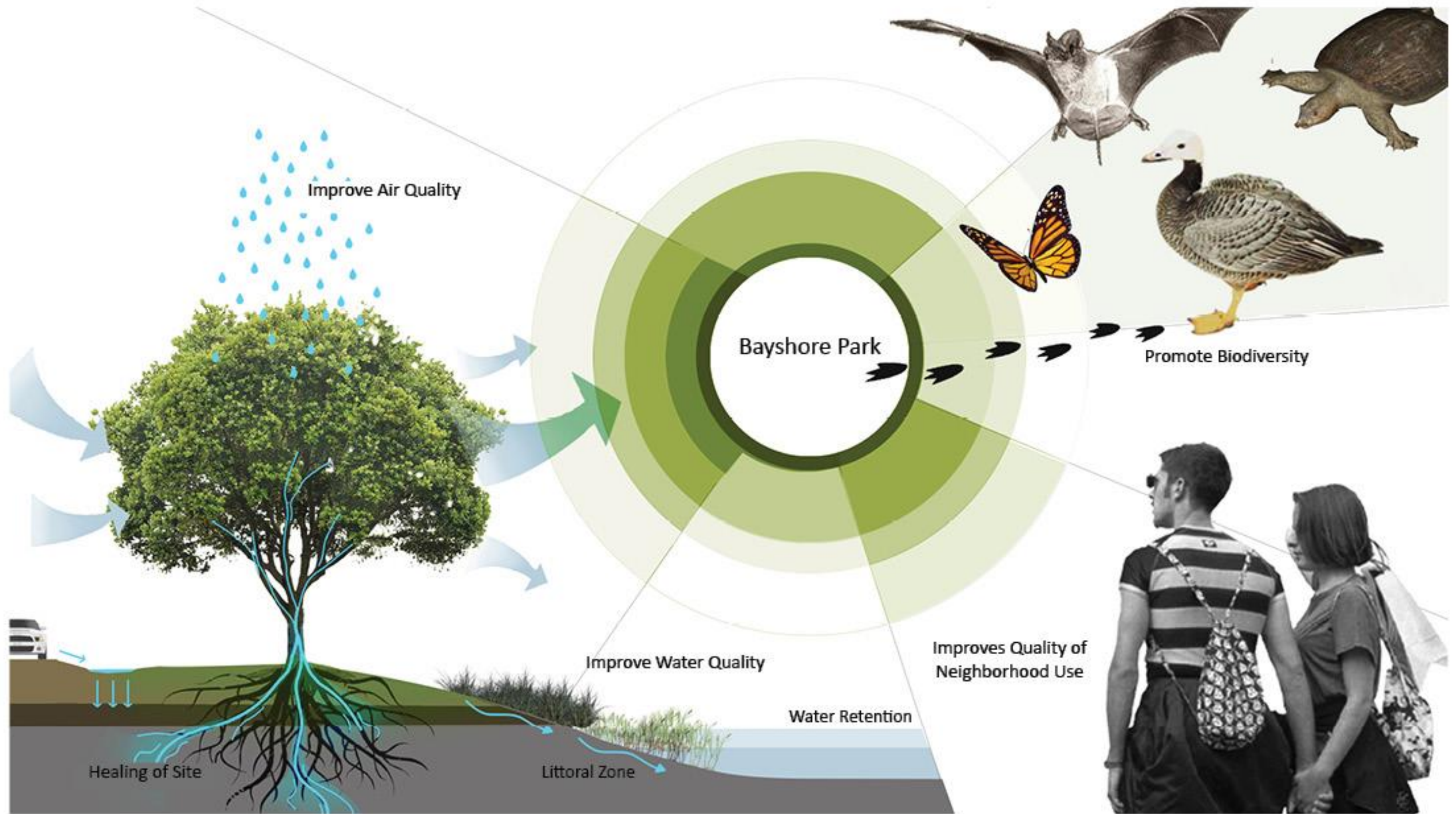
STORMWATER MANAGEMENT DIAGRAM

LEGEND

-  Stormwater Run-off from Central Bayshore South Watershed
-  Levee - Flood Perimeter +4.60' NAVD
(10' Wide Jogging / Maintenance / Emergency Path)
-  Lake at Normal Water Level -0.5' NAVD
-  Neighborhood Stormwater at Max Flood Elevation +4.55' NAVD
-  Retention/Detention Module



SITE QUALITY IMPROVEMENT



PLANT COMMUNITIES



PLANT COMMUNITIES



Quercus virginiana /
Live Oak



Bursera simaruba /
Gumbo-limbo



Swietenia mahogani /
Mahogany



Roystonea elata /
Florida Royal Palm



Lysiloma latisiliquum /
Wild Tamarind



Psychotria nervosa /
Wild coffee



Nephrolepis biserrata /
Sword fern



Borrchia frutescens /
Sea Ox-eye Daisy



Solidago sempervirens /
Seaside Goldenrod



Juncus roemerianus /
Black Needle Rush



Spartina alterniflora /
Smooth Cordgrass



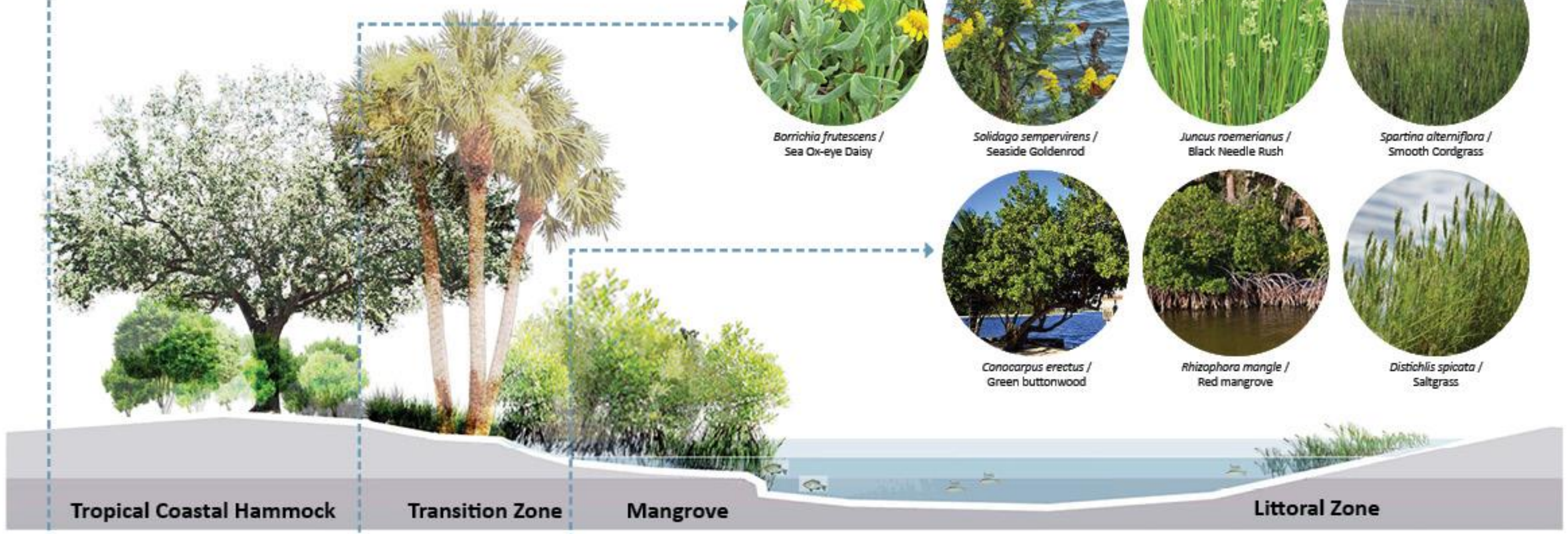
Conocarpus erectus /
Green buttonwood



Rhizophora mangle /
Red mangrove



Distichlis spicata /
Saltgrass



Tropical Coastal Hammock

Transition Zone

Mangrove

Littoral Zone

Pollinator Attractors / Bird Friendly



St. Augustine 'Floritam'



Mexican Clover



Creeping Charlie



Spanish Needles



Asclepias curassavica /
Scarlet Milkweed



Hamelia patens /
Firebush



Callicarpa american /
Beautyberry



Bouyeria succulenta /
Bahama strongbark



Lantana involucrata /
Wild-sage



Psychotria Nervosa /
Wild Coffee



OPEN LAWNS



Key Plan



NORTHWEST ENTRANCE



Key Plan



Enlargement Plan



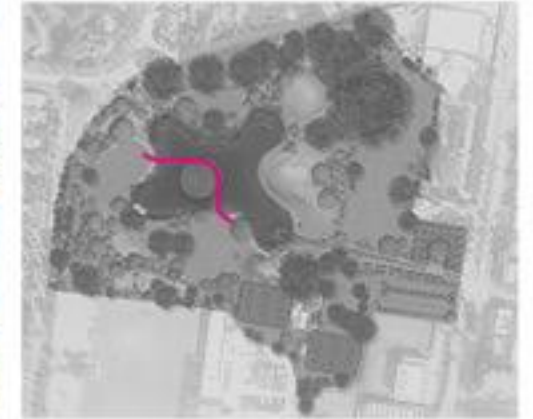
NORTHWEST ENTRANCE



BRIDGE ACROSS LAKE



Key Plan



MATERIALS



Recycled Plastic Planks & Metal Railing with Mesh

NORTHEAST ENTRANCE

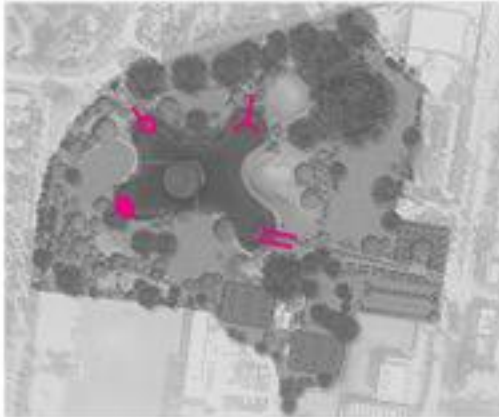


Key Plan



DOCKS ON LAKE

Key Plan



PLAYGROUND



Key Plan



MATERIALS



Equipment Colors & PIP Rubber

ENLARGEMENT PLAN



EAST ENTRANCE AT PARKING LOT



Key Plan



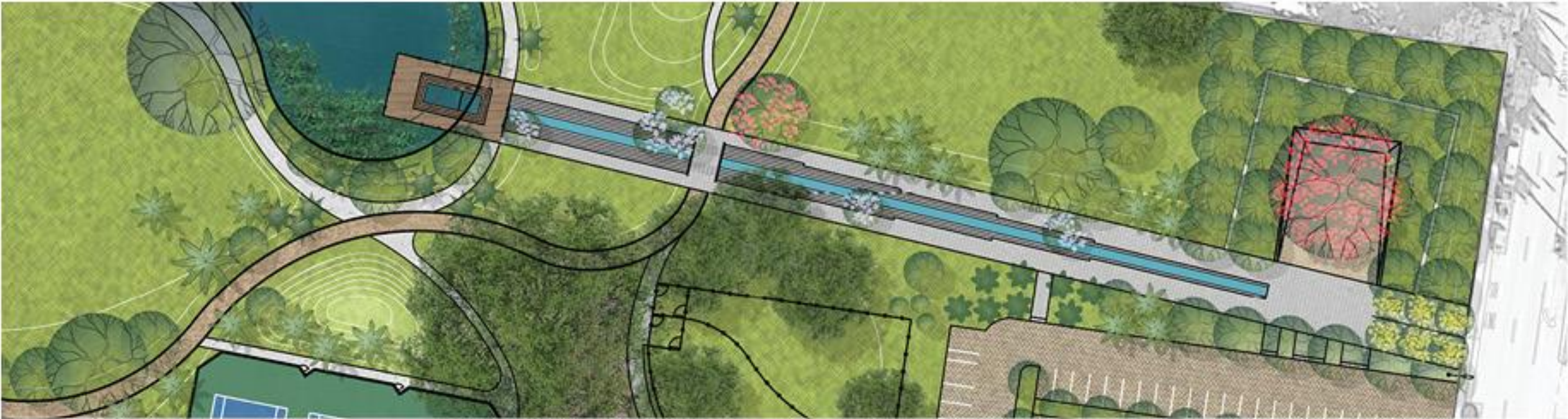
MATERIALS



Belgard AQUA-BRIC permeable pavers

EAST ENTRANCE

Enlargement Plan



Key Plan



Entry Plaza



Dock



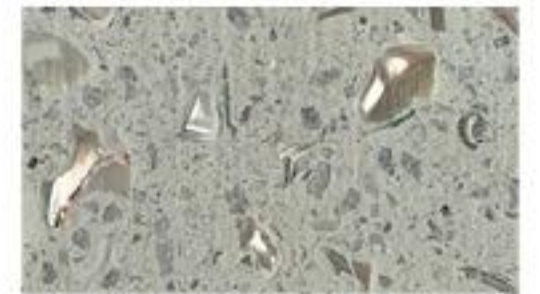
WATER FEATURE



Key Plan



MATERIALS



Concrete Paver with Shell Aggregate



River Rock

SOUTHWEST ENTRANCE



Key Plan



BUTTERFLY GARDEN, SOUTH SIDE



Key Plan



MATERIALS



10' wide jogging / maintenance loop
Stabilized Coquina Sand



5' wide paths
Concrete with Salt Finish

EXERCISE CLUSTER

JORGE EXPOSITO DOG PARK



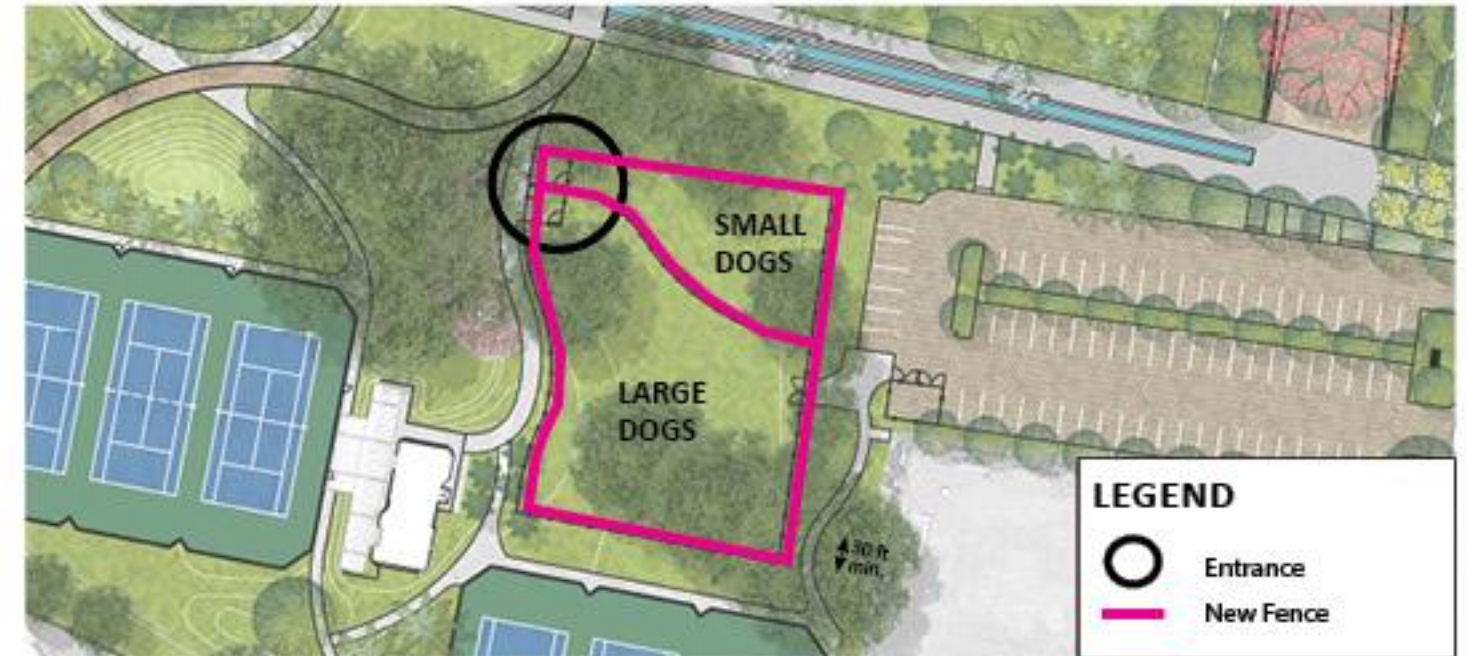
Key Plan



MATERIALS

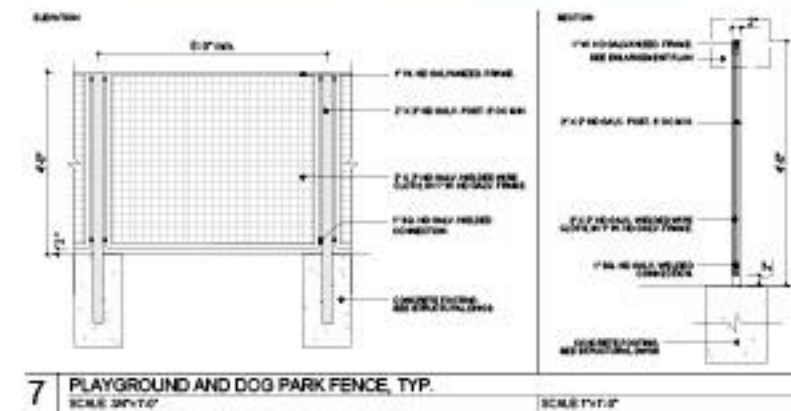


Key Plan



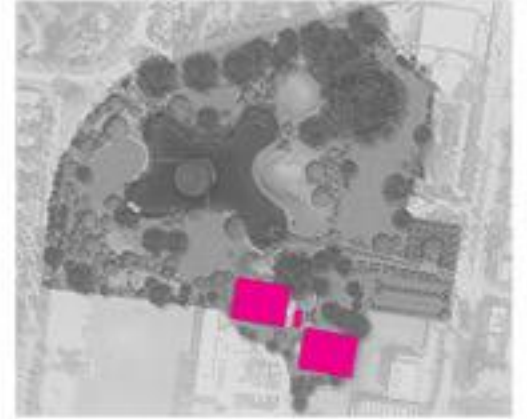
LEGEND

- Entrance
- New Fence



TENNIS

Key Plan



COURT COLORS



MIAMI OPEN COLORS:
BISCAYNE BLUE & OASIS BLUE

FENCE



FENCE CONFIGURATION



FENCE DETAIL



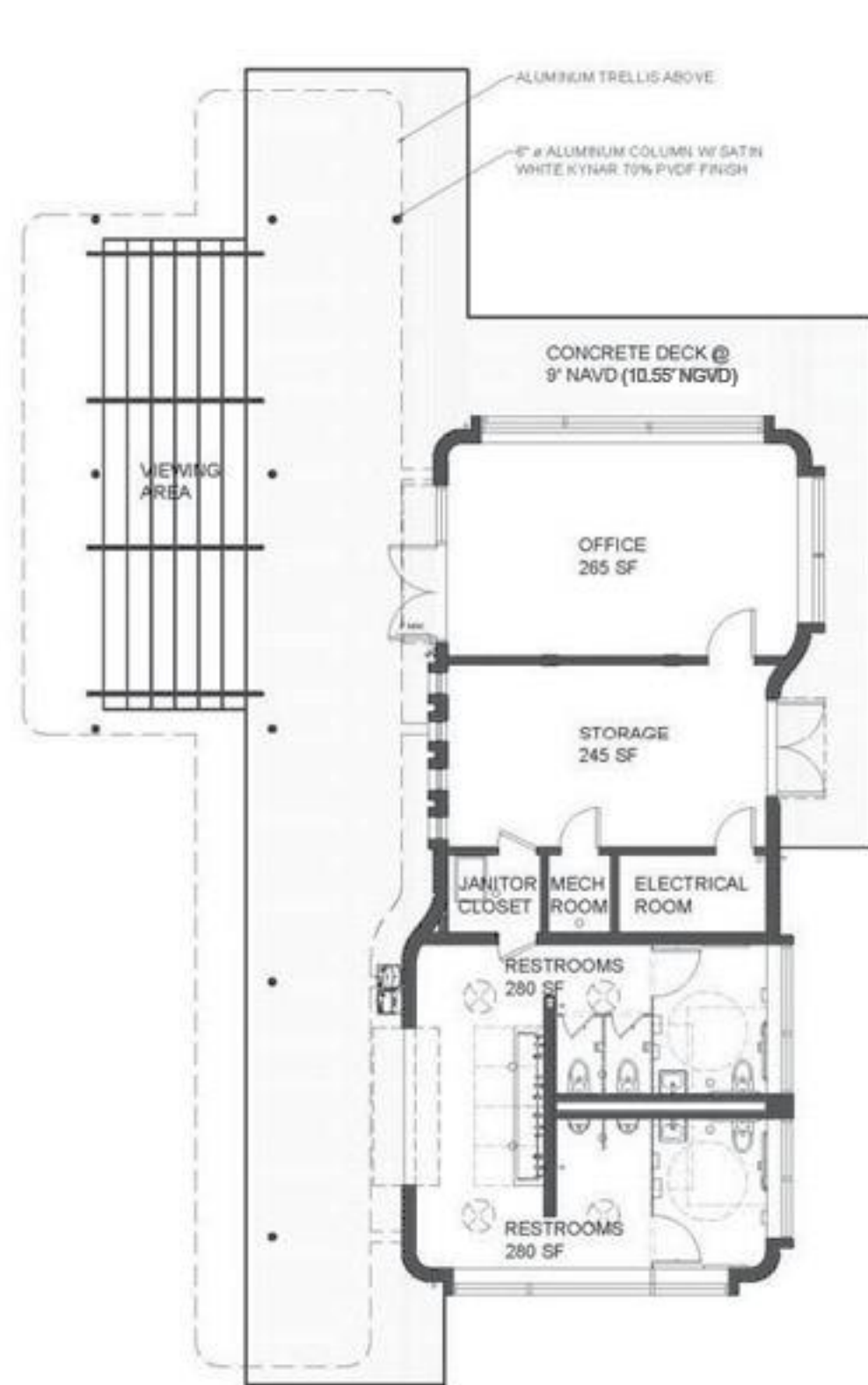
WIND SCREEN



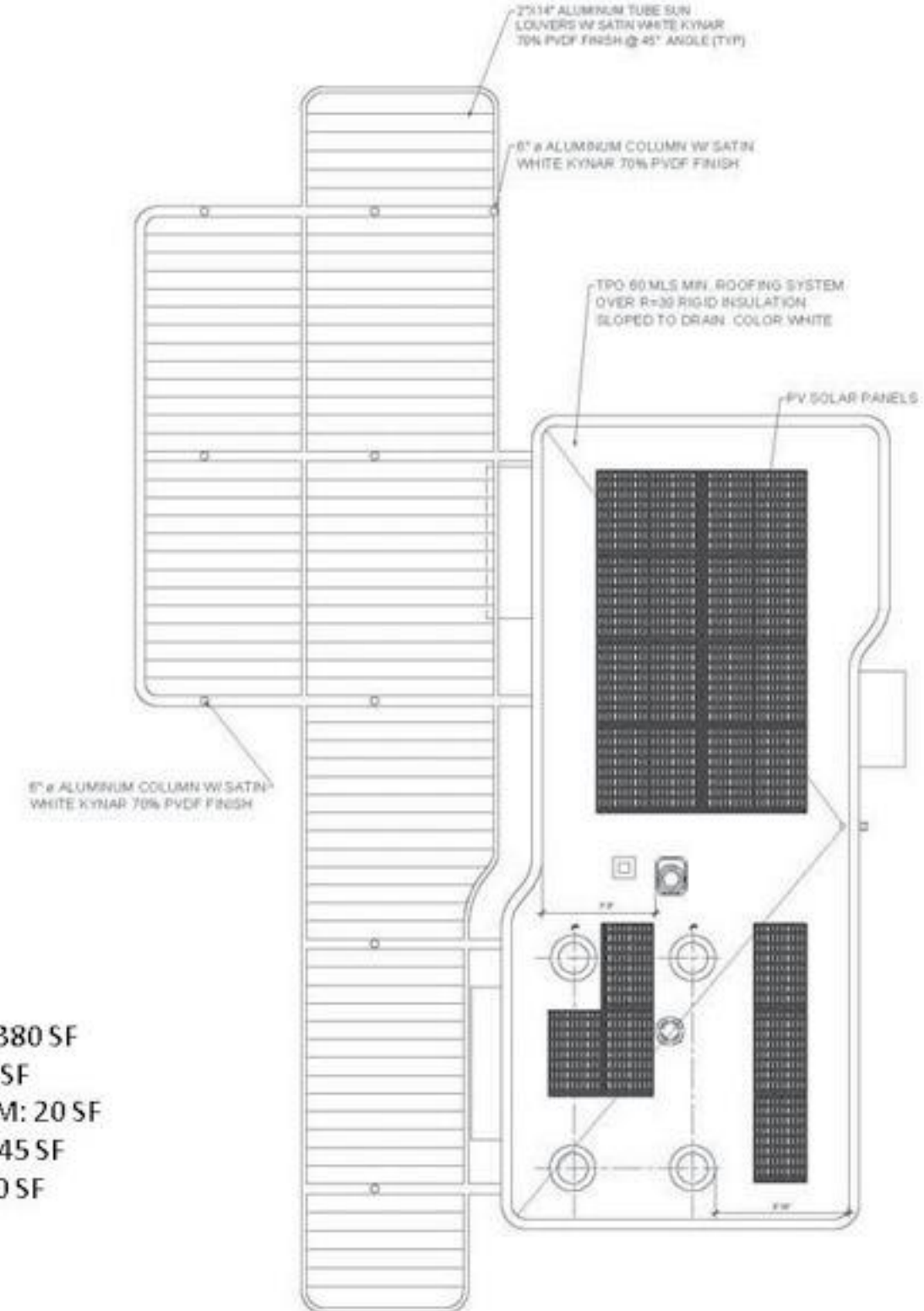
— PROPERTY LINE

- - - FENCE

TENNIS FACILITY



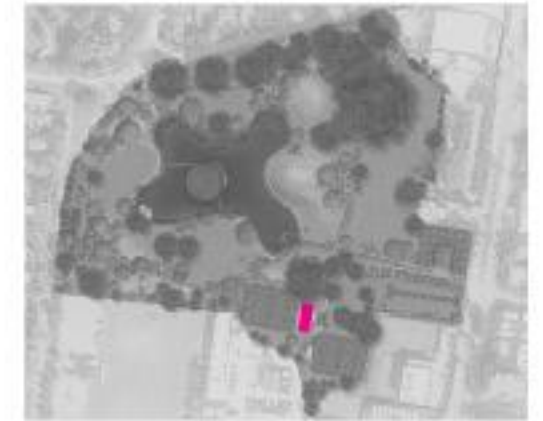
1. WOMEN'S ROOM: 380 SF
2. MEN'S ROOM: 380 SF
3. MECHANICAL ROOM: 20 SF
4. STORAGE ROOM: 245 SF
5. JANITOR CLOSET: 30 SF
6. SHADED AREA



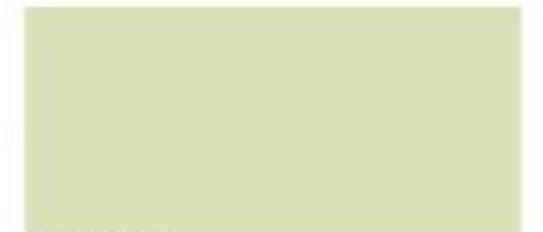
TENNIS FACILITY



Key Plan



MATERIALS



Paint Finish:
Sherwin Williams 6715

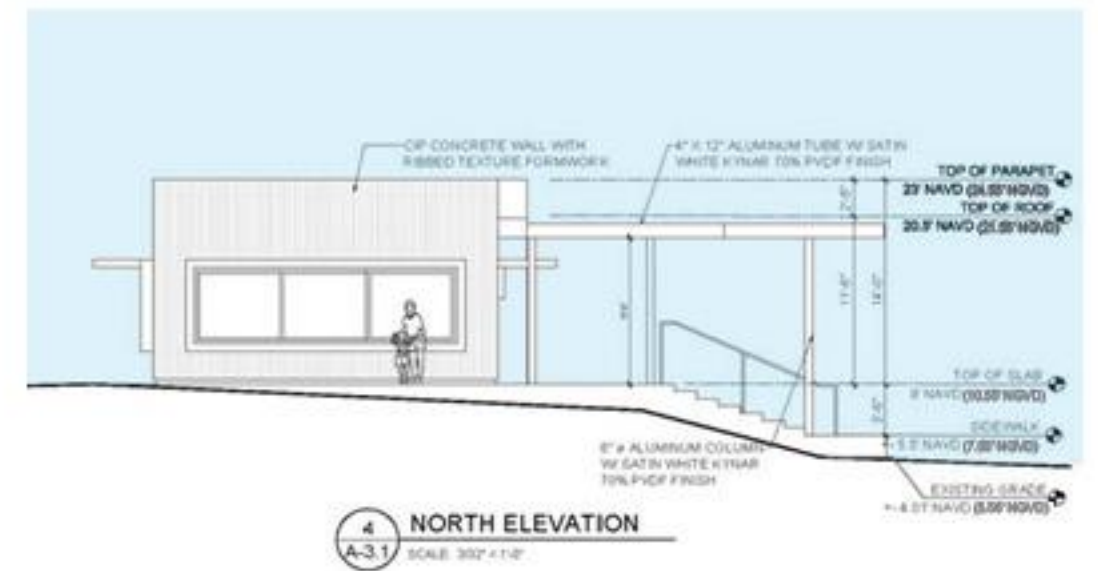


Paint Finish:
Sherwin Williams 9047



Fluted Concrete Panels

TENNIS FACILITY



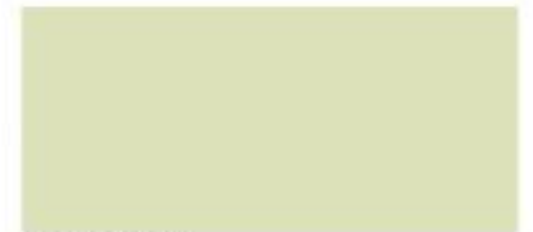
SHADE STRUCTURE



Key Plan



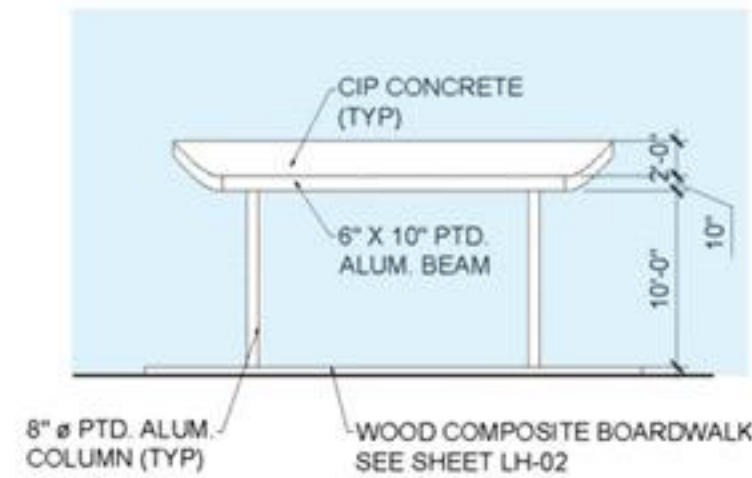
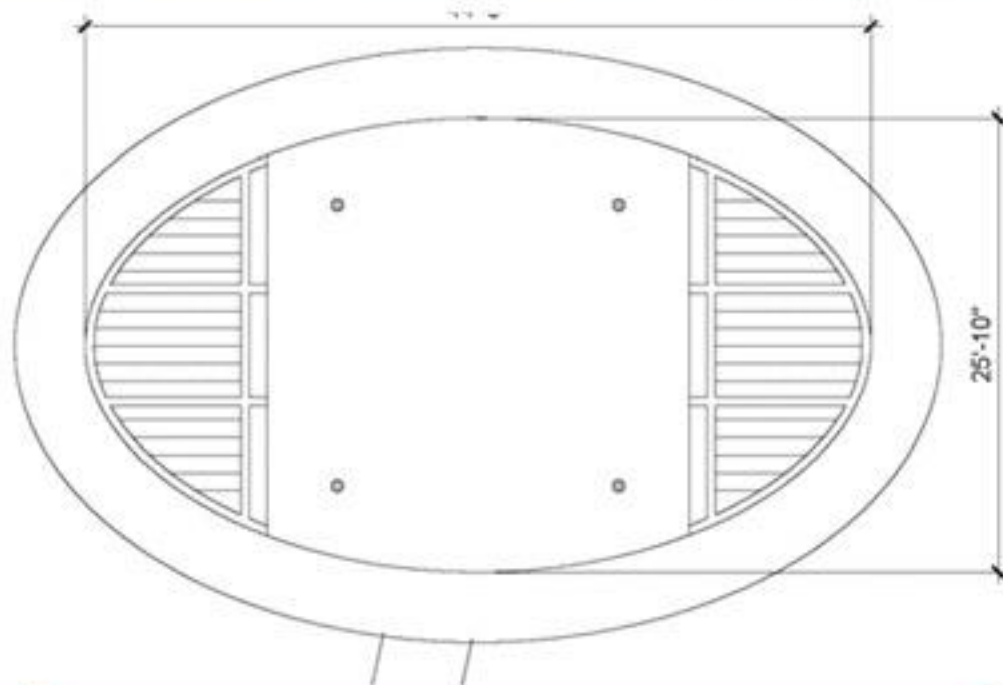
MATERIALS



Paint Finish:
Sherwin Williams 6715



Board Formed Concrete



LIGHTING FIXTURES



PARKING LOT
MIRADA



ENTRY / SERVICE / JOGGING PATH
MINI MARGO BY RAGNI



TENNIS LIGHTS
MUSCO

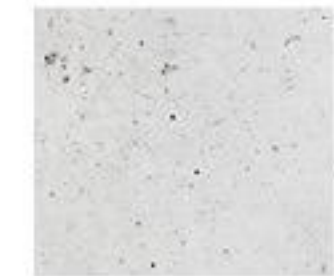
SITE FURNITURE



MATERIALS



Proposed Materials



CONCRETE



STONE



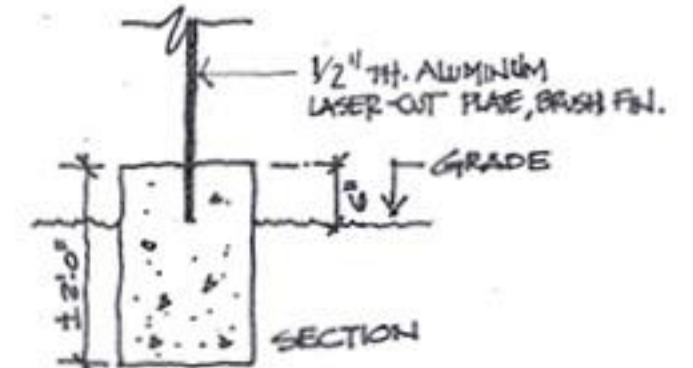
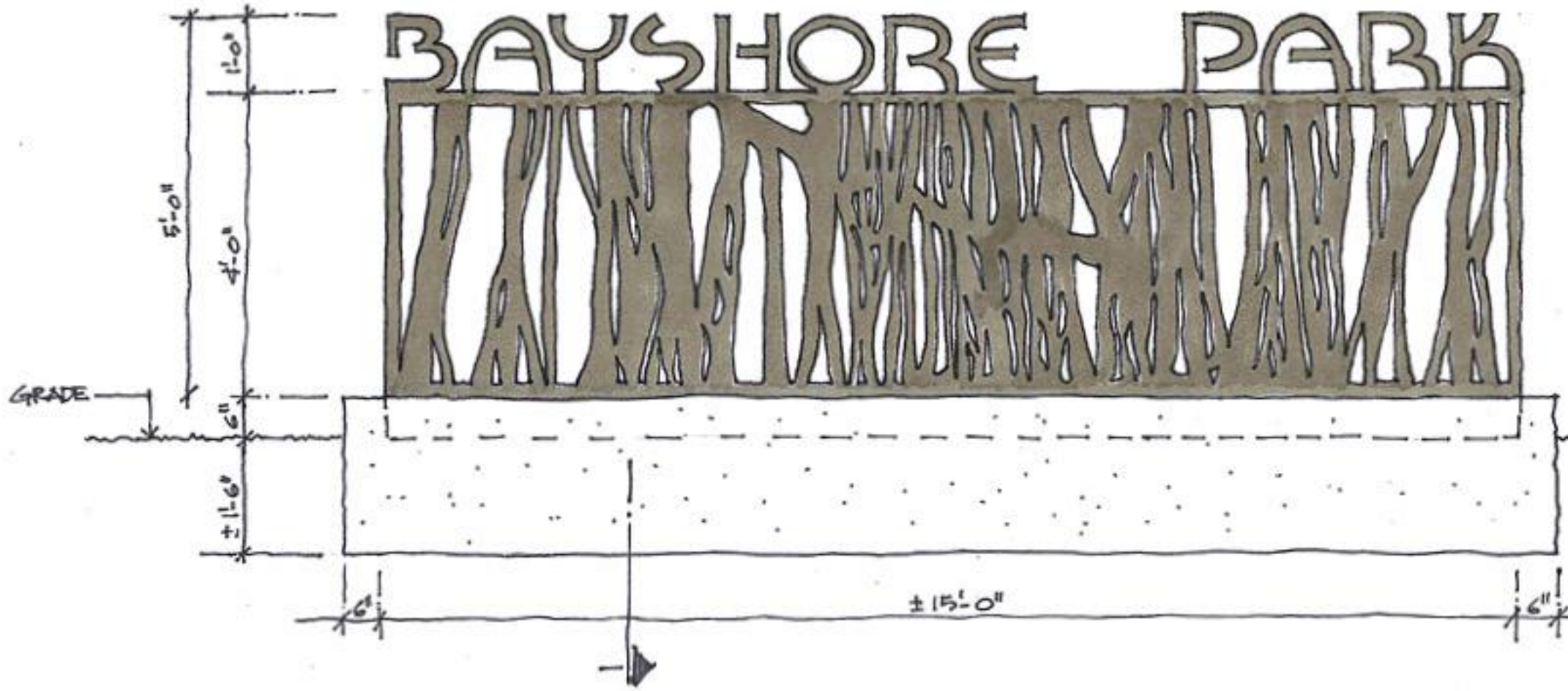
METAL



WOOD

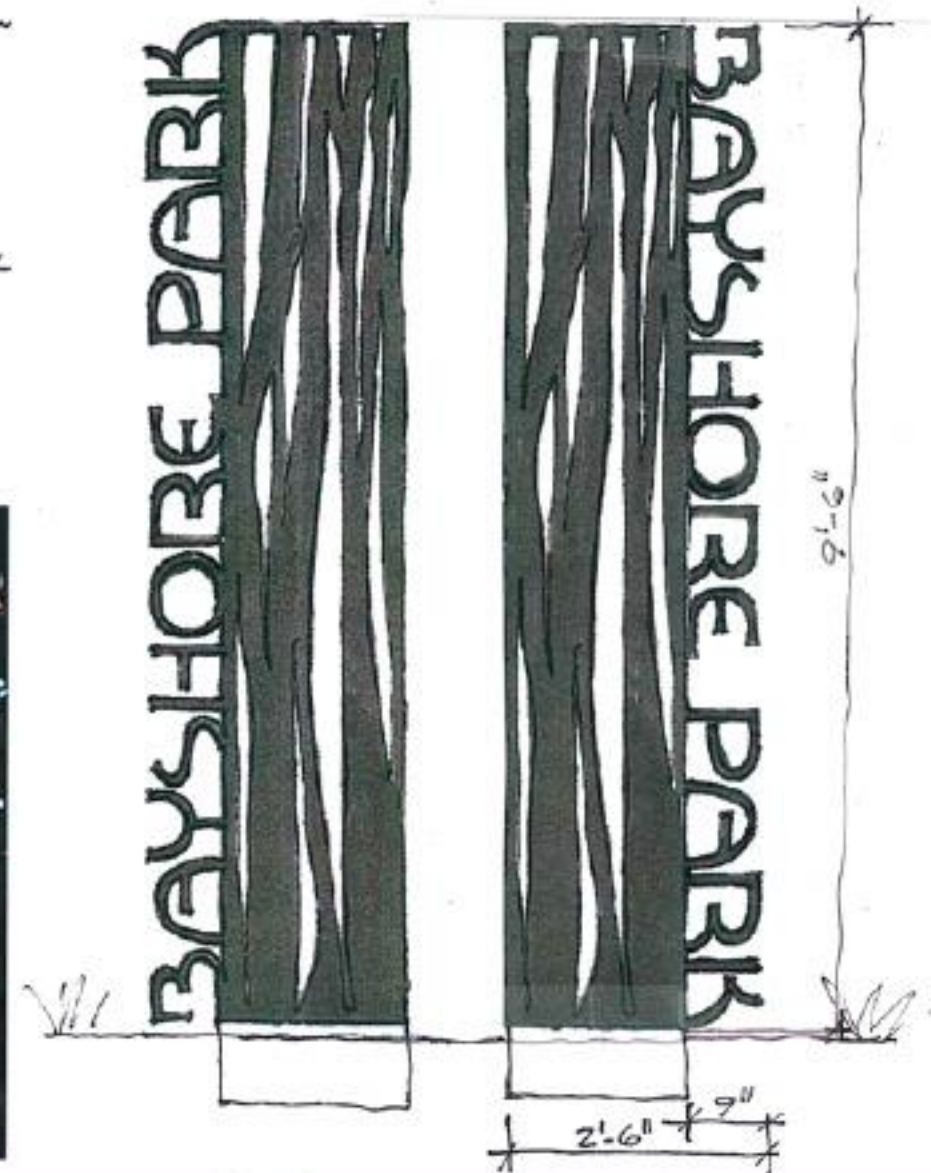
Sign Type A

SIGNAGE



Sign Base Detail

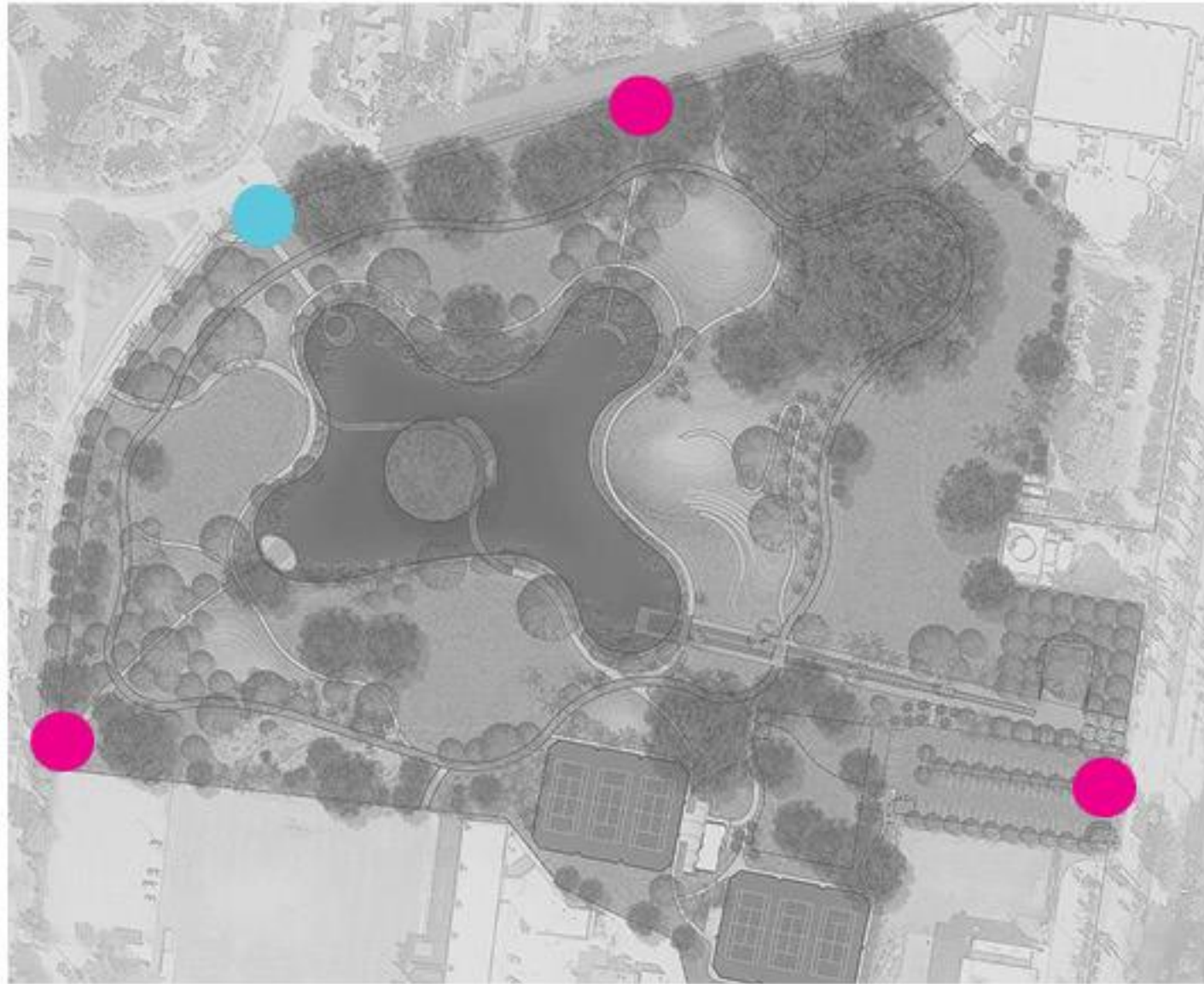
Sign Type B



Inspired by Bayshore Park Banyan Trees



Sign Locations



-  Sign Type A
-  Sign Type B

Customized Font



Lasercut Signage Example



Materials



Stainless Steel for Sign



Limestone for Sign Base (Opt. 1)



Concrete for Sign Base (opt. 2)

BANYAN TREE BOARDWALK



Key Plan



MATERIALS



Metal Grating

AMPHITHEATER



Key Plan



SUNSET HILL


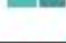

Key Plan

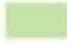




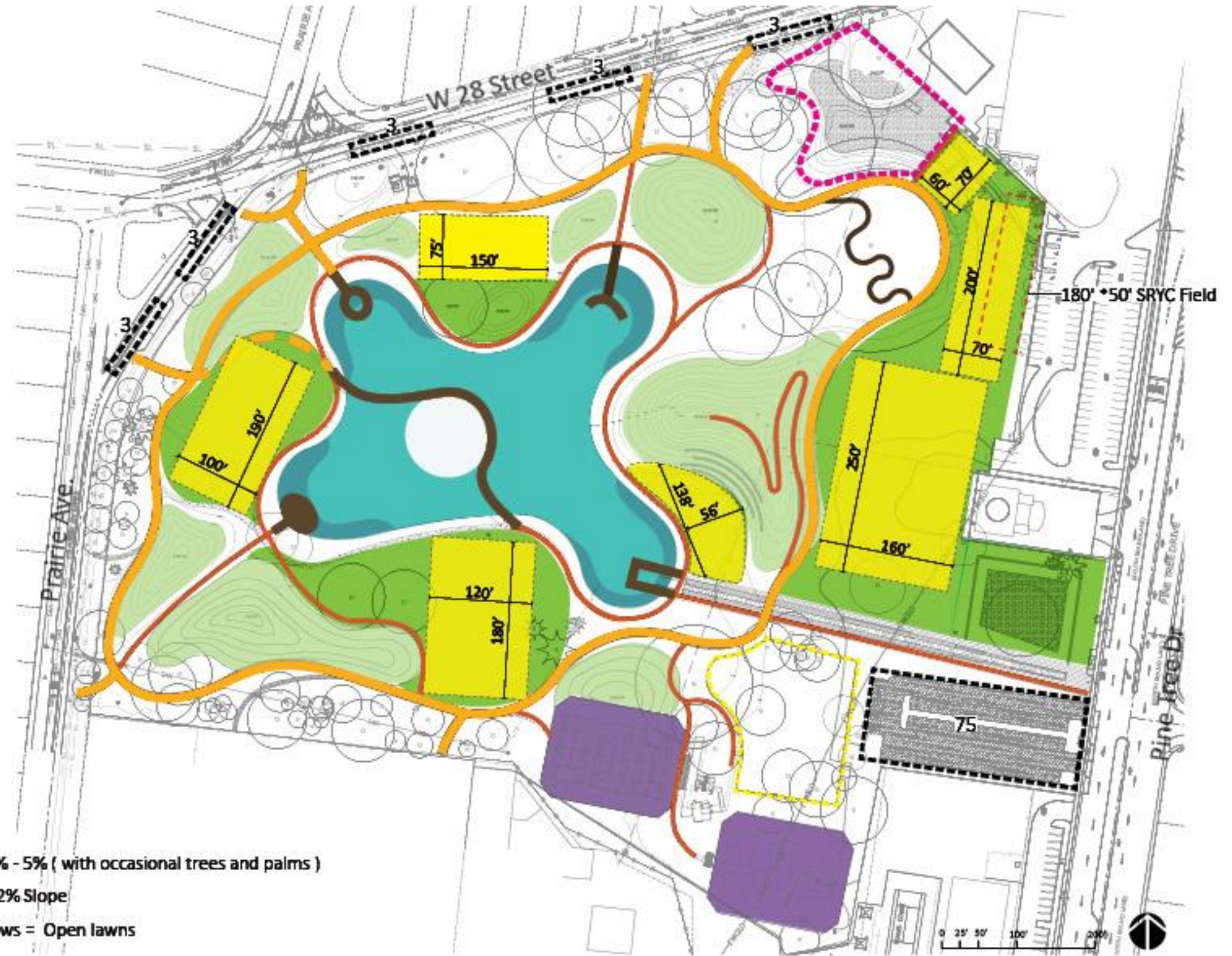
THANK YOU!

**SUPPLEMENTAL DRAWINGS
FOLLOW IF NEEDED**






PROGRAM SPECIFICATIONS FOR SITE PLAN

	Miles of Jogging Loop	0.50
	Miles of Pathway	0.75
	Miles of Trails	1.60
	Miles of Boardwalks	0.19
	Acres of Open Play	2.73
	Acres of Meadow	2.30
	Acres of Open Lawns	5.03
	Acres of Hills	2.55
	Acres of Lake	1.65
	Acres of Littoral Zone	0.5
	Acres of Lake with Littoral Zone	2.15
	Acres Playground	0.5
	Acres Dog Park	0.55
	Tennis Courts	6
	Acres Parking Lot	0.63
	Parking Stalls	90
	Restroom	1*

-  Hills + 5%
 -  Meadows 0% - 5% (with occasional trees and palms)
 -  Open play < 2% Slope
- *Open play + Meadows = Open lawns



VIEW CORRIDOR + PARK ACCESS

-  Multi use loop trail/jogging, emergency access
-  Vehicular Service Access
-  Park Access
-  Main Views
-  Island Section

